

## ETP-WM-TPK-IP66 Wall-Mounted Blue Light Station with Emergency Trip Switch

### Description

The **ETP-WM-TPK-IP66** Wall-Mounted Blue Light Station (BLS) with Emergency Trip is an ideal security solution for mass transit applications. Typically used on train platforms, the unit features an emergency trip button, which can be engaged to cut power to the tracks and halt an oncoming train. The unit is to be installed with an available (sold separately) emergency telephone (ETEL) that automatically dials a pre-programmed number connecting the user with an operator for further assistance. Only authorized personnel can disengage the emergency trip button through a key reset.

### Features

- Includes emergency trip button, which can be engaged to cut power to tracks
- Attention-getting LED Blue Light is included and mounted inside a polycarbonate housing. The LED Blue Light is continuously lit and flashes for duration of a call when “EMERGENCY” button is pressed to draw attention to the unit.
- Emergency telephone faceplate is illuminated at all times by an LED Panel Light
- Vandal-resistant, 316 marine grade stainless steel construction
- A variety of signage, graphics, and color choices are available
- ADA-compliant

### Specifications

Dimensions (W x D x H):	10.7 x 9.8 x 32.2 in. (272 x 249 x 818 mm)
Weight:	49 lbs. (22.2 kg)
Construction:	12GA (.105 in.) brushed marine grade (316) stainless steel with impact-resistant polycarbonate lens and resistance to UV-fade
Ingress Protection:	IP66 rating, NEMA 4X
Colors:	Brushed stainless steel is standard. Available painted in custom colors.
Signage:	2-inch high reflective red “EMERGENCY” lettering with wide-angle visibility is standard. Available as “ASSISTANCE”, “INFORMATION”, or custom lettering, colors, and graphics.
Lighting:	<div>LED Blue Light: 209 lumens peak, 78 flashes per minute, 70% of initial lumens after 50,000 hours of operation</div> <div>LED Panel Light: Ultra bright LEDs, 50,000-hour lifetime</div>
Power Supply:	<b>Input:</b> 90 ~ 264VAC (47 ~ 63Hz) <b>Output:</b> 12VDC
Mounting:	Mounts to a wall (standard) or straps to a pole or a kiosk (requires available pole mounting kit—see <b>Accessories</b> )
Limited Warranty:	2-year limited warranty on electronics 5-year limited warranty for metal components



# ETP-WM-TPK-IP66

## Wall-Mounted Blue Light Station with Emergency Trip Switch

### Options

Fixed Camera Provision:

**ETP-WM-TPK-OP2-IP66** includes a provision to mount and install a third-party fixed camera. Camera not included. For additional dimensional details and information on supported cameras, please contact Talkaphone.

Built-in Fixed IP Camera:

**ETP-WM-TPK-OP3IP-IP66** includes a built-in fixed IP camera above the call station.

### Accessories

Pole Mounting Kit:

Model **ETP-PMKT-1** Pole Mounting Kit for strapping ETP-WM Series wall mount to a pole of up to a 20-inch diameter.

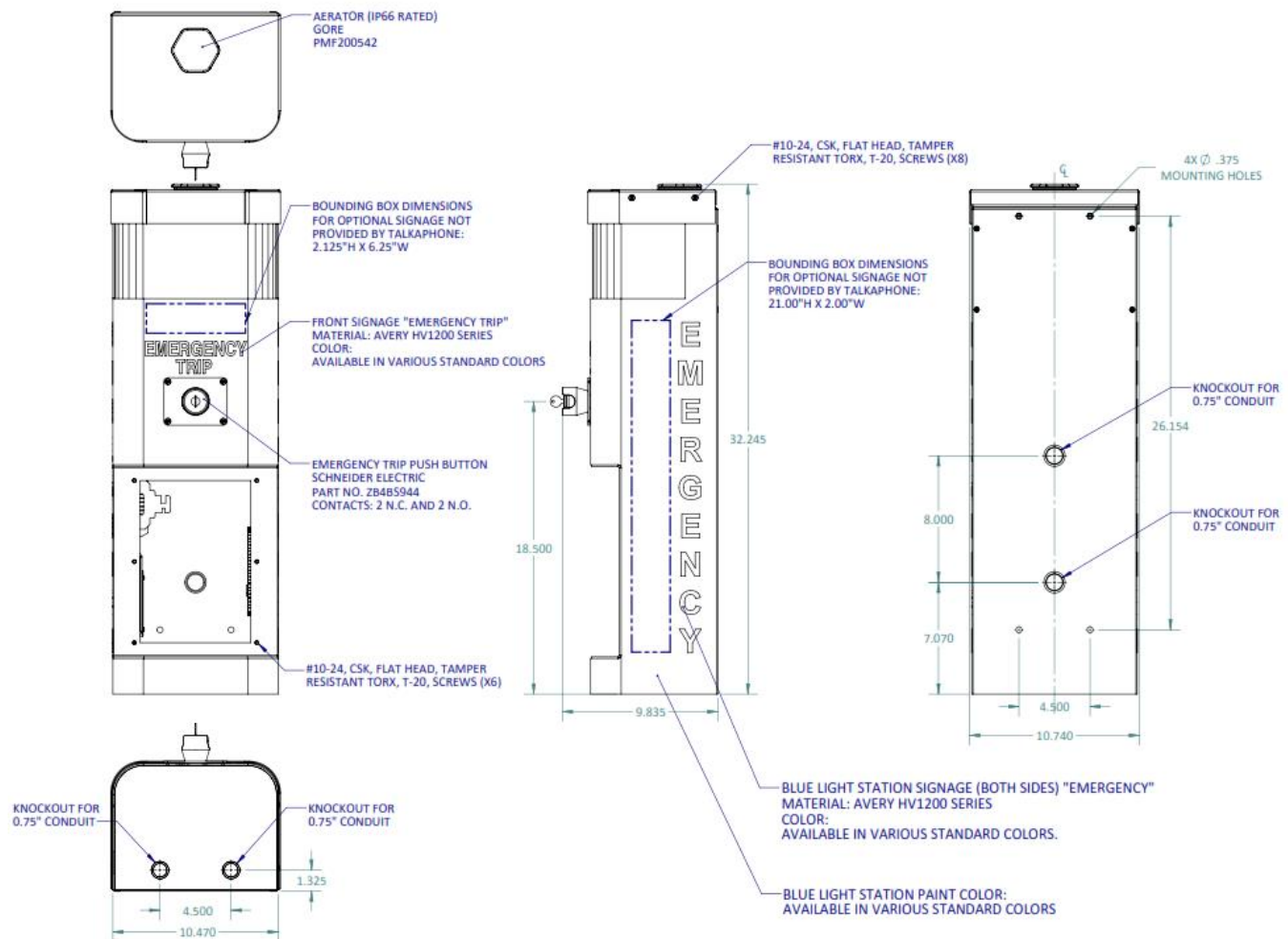
Model **ETP-PMKT-2** Pole Mounting Kit for strapping ETP-WM Series wall mount to a pole of up to a 40-inch diameter.

Banding Tool:

Order **ETP-PMKT-TOOL** Banding Tool for use with any pole mounting kit.

**ETP-WM-TPK-IP66** includes an LED Blue Light, an LED Panel Light, an Emergency Trip Button Assembly with Multi-position Terminal Block, and an internal power supply. Emergency Telephone (ETEL) is purchased separately. For specifications of Emergency Trip Button Assembly, see ETP-TPK datasheet.

### Dimensional Diagram



All dimensions are in inches and are provided for reference only.