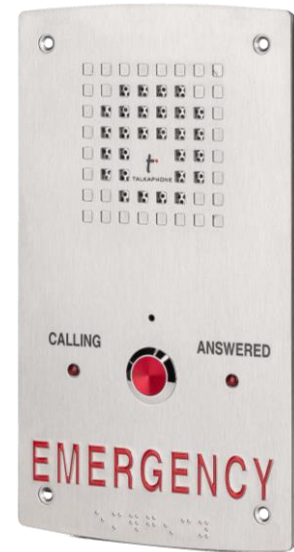


ETP-120 SERIES COMPACT ANALOG CALL STATION

The **ETP-120 Series** is an indoor, hands-free analog call station for use in locations such as elevators, stairwells, indoor controlled access areas, and senior citizen housing.



FEATURES

- Vandal resistant stainless-steel faceplate and metal button
- Connects via analog phone lines or analog PBX extension lines
- Phone line powered: no power supply or battery backup needed
- Push button once to call, then speak hands-free
- Two (2) LED indicators for the hearing impaired (CALLING and ANSWERED)
- Built-in auto-dialer can dial up to five (5) numbers. If first number does not answer or is busy, dials second number. If second number does not answer or is busy, dials third number—and so on.
- Auto-answer on inbound calls allows security to monitor and initiate calls with the call station
- Automatically inform attendant of the location of call station through recorded message that plays at the beginning of the call
- Compatible with **ETP-TAL-1** (optional)—polling and call identification system
- One (1) built-in relay input
- Available (optional) with one (1) relay output
- Available with custom verbiage

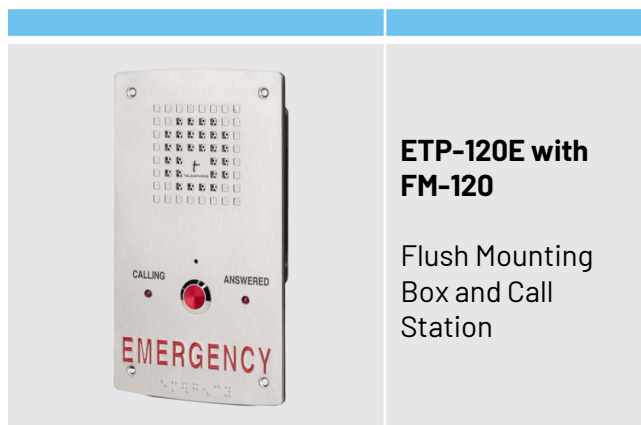


SPECIFICATIONS

Construction	0.09" (2.2mm) #4 brushed 304 stainless steel faceplate
Weight	6 lbs (2.7kg)
Mounting	Available flush and surface mounts
Communication	Two-way hands-free communication
Digital Capacity	Up to 20-digits, including 4-second pause, for each of five (5) phone numbers
Power Source	Phone line powered (requires 20mA at 24 V off-hook)
Connection	Parallel tip and ring flying leads for field installation
Programming	Non-volatile EEPROM programming can be done from any telephone. No battery backup is needed.
"On Time"	Programmable for no limit or from 1 to 9 minutes in 1-minute increments
Wiring Requirements	One (1) twisted-shielded pair
Operating Temperature	32°F to +158°F (0°C to +70°C)
Relative Humidity	Up to 95% non-condensing
Optional Relay Output (for models configured with the "X" option)	Contact Voltage (Max.): 200 VDC Contact Current (Max.): 500 mA Contact Power (Max.): 10 W Resistive*
Warranty	2-year limited warranty

* **Note: If driving an inductive load, a protection device must be used.**

** **All specifications are subject to change without notice.**



**ETP-120E with
FM-120**

Flush Mounting
Box and Call
Station



**ETP-120E with
SM-120**

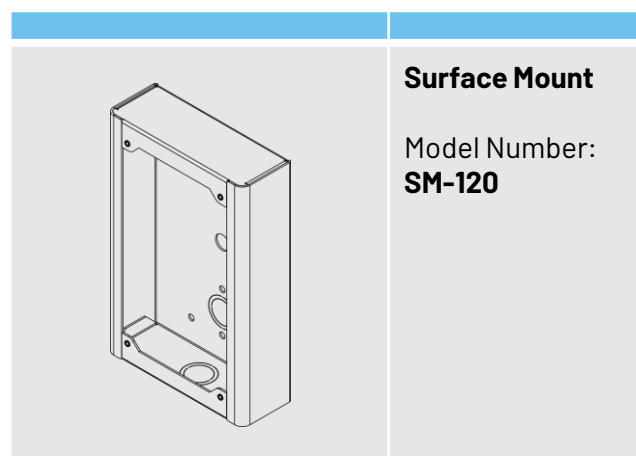
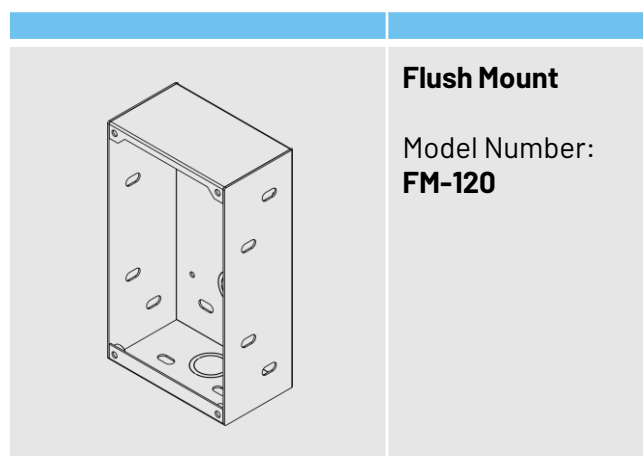
Surface Mounting
Box and Call
Station



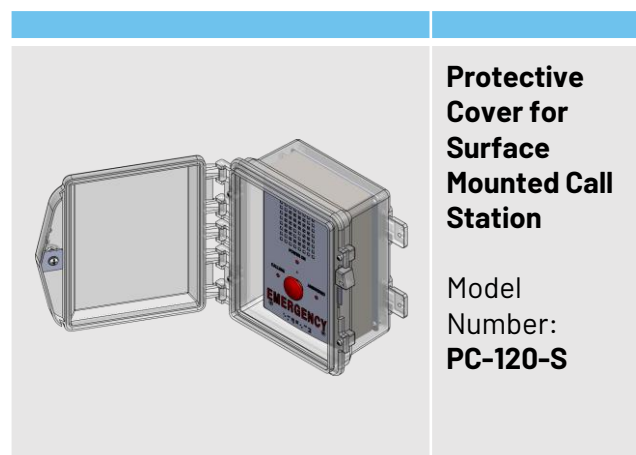
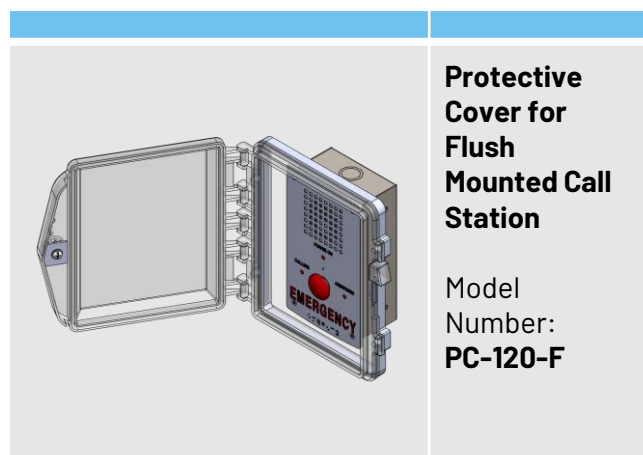
ORDERING INFORMATION

	Model Series	Verbiage and Push Button	Relay Output
	ETP-120	E "EMERGENCY" verbiage H "HELP" verbiage SB No verbiage, black pushbutton SR No verbiage, red pushbutton	[Leave Blank] Does not include built-in relay output X One (1) built-in relay output
Example	ETP-120	E	X

MOUNTS



PROTECTIVE COVERS

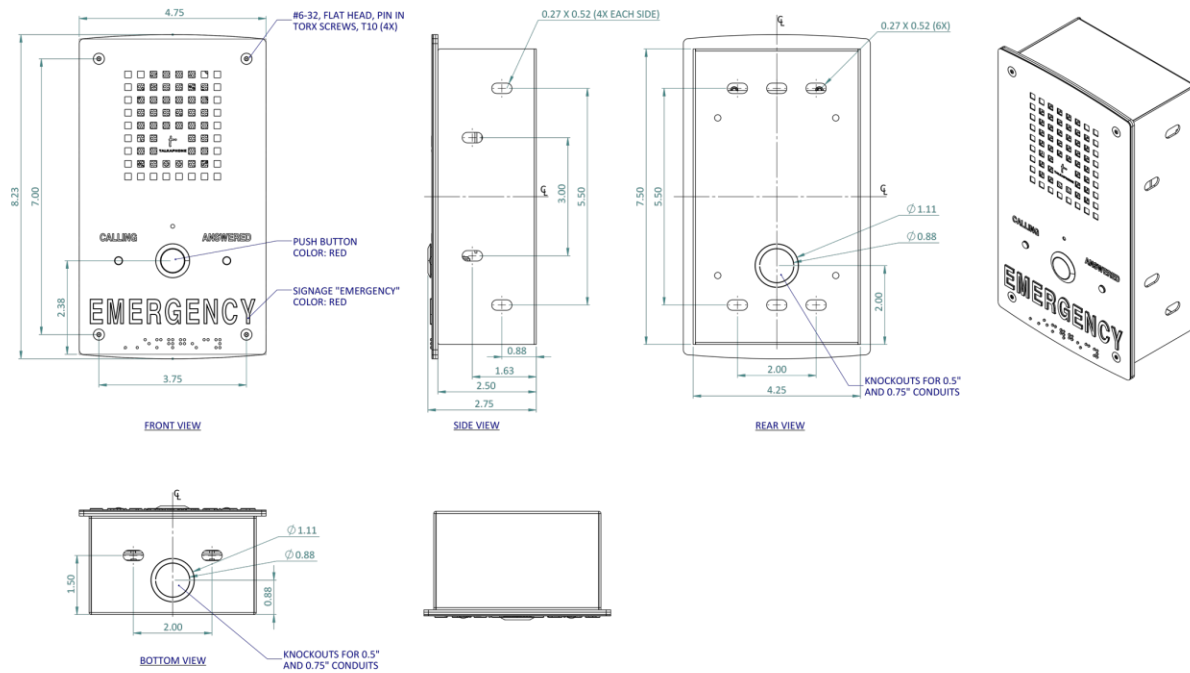


* All specifications are subject to change without notice.



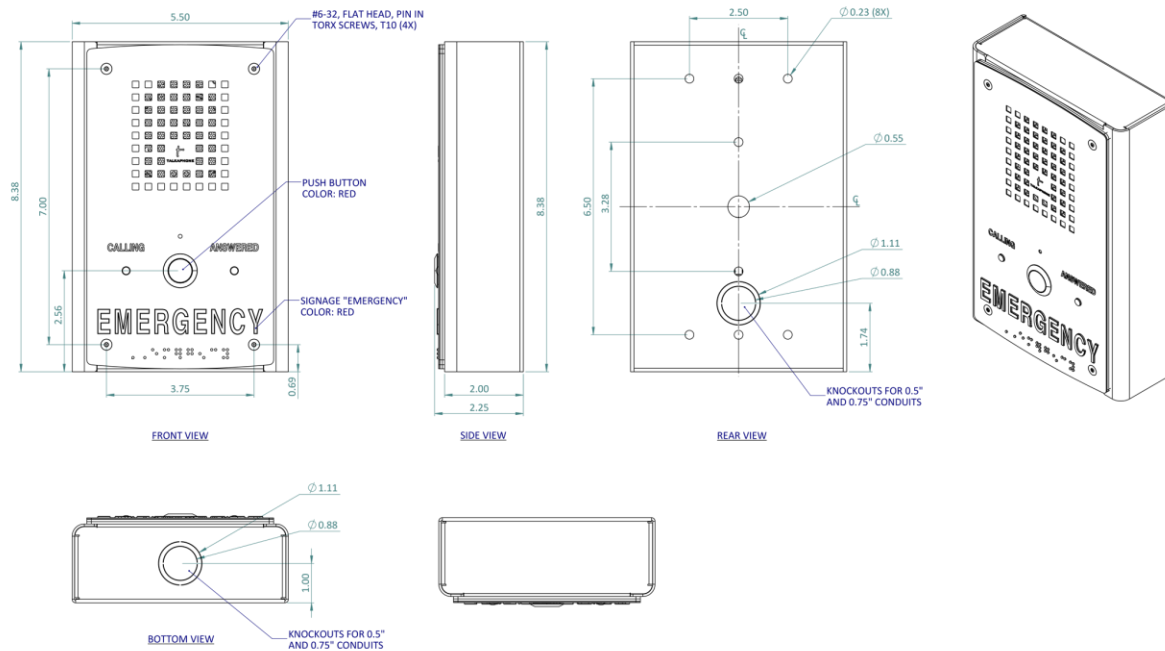
DIMENSIONAL DRAWING – ETP-120E WITH FM-120

All dimensions are in inches and are provided for reference only.



DIMENSIONAL DRAWING – ETP-120E WITH SM-120

All dimensions are in inches and are provided for reference only.



Talk-A-Phone, LLC • 7530 North Natchez Avenue • Niles, IL 60714
Phone 773.539.1100 • info@talkaphone.com • www.talkaphone.com

ETP-120 SERIES
COMPACT ANALOG CALL STATION

Page 4 | Rev 12/3/2025

Copyright 2025 Talk-A-Phone, LLC. All rights reserved. Talk-A-Phone, Talkaphone, ECO TOWER, and WEBS are registered trademarks of Talk-A-Phone, LLC.

All other trademarks mentioned in this document or website are the property of their respective owners and does not imply or indicate any approval, endorsement, sponsorship, or affiliation with such owners unless such approval, endorsement, sponsorship, or affiliation is expressly indicated.

For the latest terms and conditions and limited warranty information, please visit: <https://www.talkaphone.com/terms-of-use-and-limited-warranty>

All prices and specifications are subject to change without notice.